


# Supplemental Aid: **MNEMONIC DEVICES**

Supplemental aids are paper-based resources that assist students in recalling information. Supplemental aids should be chosen based on the student's needs and used consistently in instruction and assessment. Start with providing a completed version of the mnemonic device during instruction. Guide the student with prompts (verbal, written, visual) while they practice the new skill. As the student becomes more proficient, use increasingly complex questions for them to answer or problems for them to solve. When the student has mastered more challenging questions and problems with the completed mnemonic device, slowly remove the words, images, and symbols. Continue this process until the student can routinely, independently, and effectively answer questions and solve problems using the blank mnemonic device. At this stage, the student is ready to use the blank mnemonic device as an allowable supplemental aid on the state assessment.

## MNEMONIC DEVICES

---

**HOMES**  
Huron  
Ontario  
Michigan  
Erie  
Superior



---

**PEMDAS**  
**Please Excuse My Dear Aunt Sally**  
Parenthesis  $()$   
Exponents  $5^2$   
Multiplication  $\times$   
Division  $\div$   
Addition  $+$   
Subtraction  $-$

www.acentral.educationACCOMMODATION central★ REGION 13 EDUCATION SERVICE CENTER

## HOMES

---

H  
O  
M  
E  
S

---

## PEMDAS

---

P  
E  
M  
D  
A  
S

---

## DMSB

---

D  
M  
S  
B

---

## RAPS

---

R  
A  
P  
S

**TEACH** ➔ **TEST**

# MNEMONIC DEVICES

---

## HOMES

Huron

Ontario

Michigan

Erie

Superior



---

## PEMDAS

Please Excuse My Dear Aunt Sally

Parenthesis  $()$

Exponents  $5^2$

Multiplication  $\times$

Division  $\div$

Addition  $+$

Subtraction  $-$

# MNEMONIC DEVICES

---

## DMSB

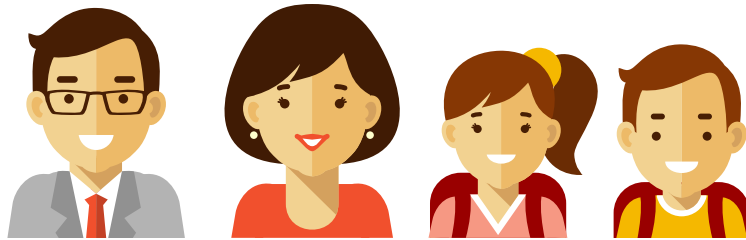
Dad Mother Sister Brother

Divide

Multiply

Subtract

Bring down



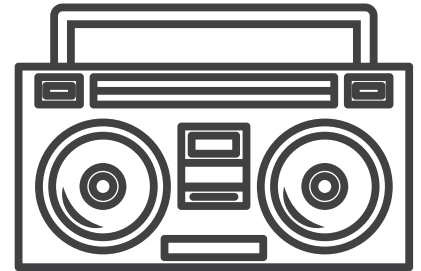
## RAPS

Restate the question in your answer.

AnsWER all parts of the question.

Prove it with evidence from the text.

Sum it up!



**HOMES**

**H  
O  
M  
E  
S**

---

**PEMDAS**

**P  
E  
M  
D  
A  
S**

---

**DMSB**

**D  
M  
S  
B**

---

**RAPS**

**R  
A  
P  
S**